

REVISIONS					
ZONE	ECN	REV.	DESCRIPTION	DATE	APP'D
	101344	J	1-REDRAWN IN SOLIDWORKS; 2-UPDATES MADE TO MATCH CURRENT PRODUCTION; 3-THE OLD FORM NUMBER IS NOW THE DRAWING NUMBER	10-29-12	TMS
	102141	K	1-WAS: INSTALL WASHER SO THAT MARKINGS ARE SEATED FACE DOWN ON THE SHAFT FLANGE AND MARKS ARE NOT VISIBLE WHEN SEATED.	06-28-13	TJM
	104852	L	1-ITEM #4- WAS:1073482, 2-REMD: BR FROM PART #S, 3-UPDATED TITLE BLOCK	11AUG15	TJM
	1001	M	AQ Matic update & verified part numbers	17JAN17	MGS

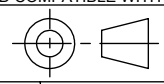

ITEM NO.	DESCRIPTION	PART NUMBER	QTY.
1	VALVE BODY, SERIES 537	NORYL 1073472	1
2	NUT, DISC PLATE, 537, MCHD	PVC 1073459	1
3	DISC, 537	EPDM 1073463	1
		FKM 1073465	1
4	DISC HOLDER, K537	ULTEM 43361	1
5	O-RING, -212	EPDM 1071745	4
6	O-RING, -240	EPDM 1071757	2
		FKM 1071830	1
7	RING, RETAINING	1073505	1
8	V537 - SHAFT GUIDE (MACHINED)	PVC 1073478	1
9	SHAFT, ASSY, V537/ 3" PLSTC VLV	1073508	1
10	O-RING, 2-259	BUNA 1071714	2
		FKM 1071834	2
11	DIAPHRAGM, 537	BUNA 1073462	1
12	NUT, CAP RETAINING, V537	NORYL 1073446	1
13	PLATE, LOWER DIAPHRAGM, K537	NORYL 61886	1
14	CAP, 537 MOLDED	NORYL 1073445	1
15	PLATE, DIAPHRAGM, UPPER, K537	NORYL 1073448	1
16	O-RING, 2-024	BUNA 1071676	1
17	DIAPHRAGM, SUPPORT, K537	NORYL 1073491	2
18	O-RING, -239	EPDM 1071756	2
		FKM 1071829	2
19	WASHER, .867 CUSTOM	43328	1
20	NUT, RETAINING, 537	NORYL 1073458	2

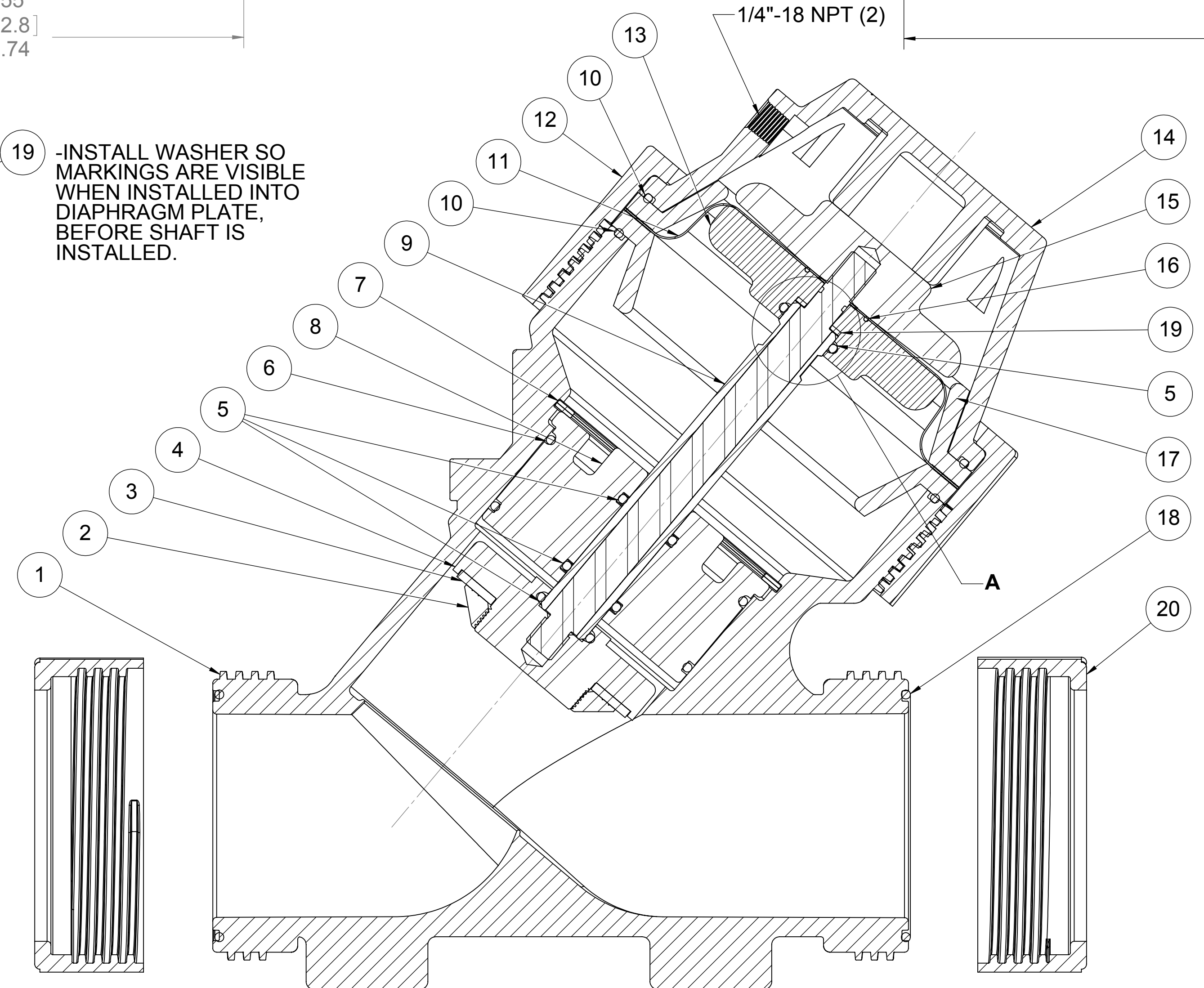
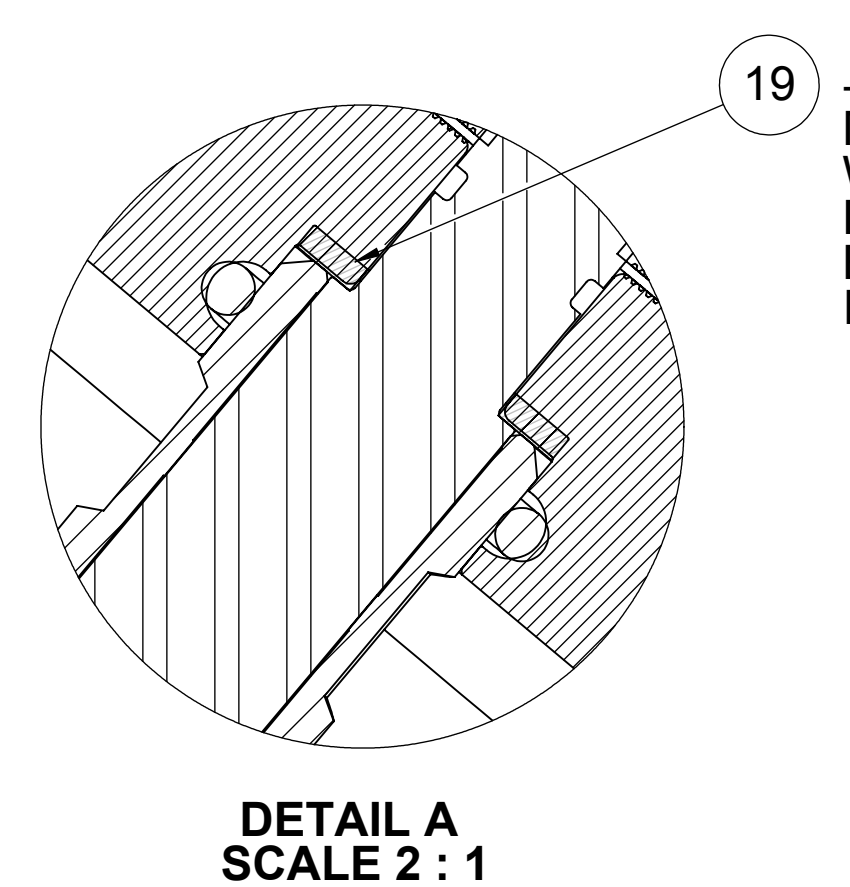
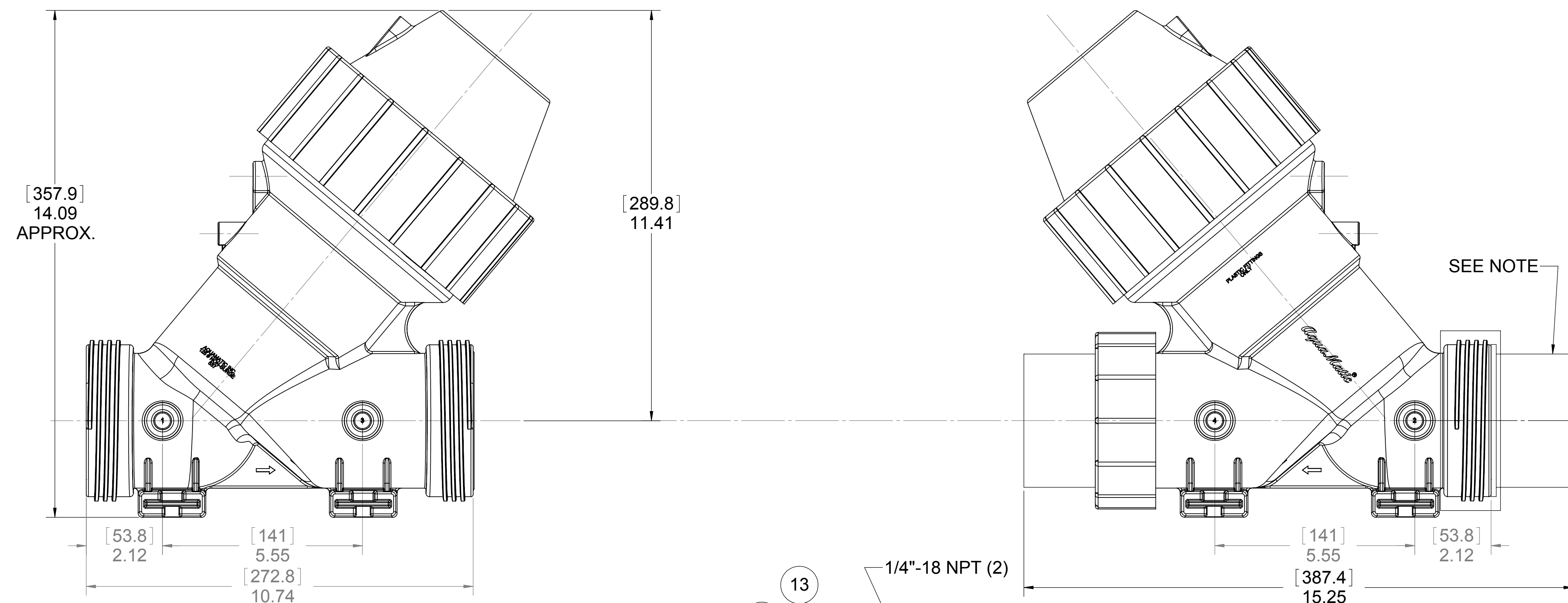
NOTE:
CONNECTORS NOT FURNISHED WITH VALVE.
SEE DWG. NO. 1078165 FOR FEMALE SOCKET
WELD CONNECTORS.

REPAIR PARTS KITS	
DESCRIPTION	PART NO.
DIAPHRAGM & SEALS KIT CONSISTS OF ITEM NO'S 3, 4, 5, 6, 10, 11, 16, 18	BR1070321 (537-RAE) E.P.D.M. INCLUDES DIAPHRAGM BR1073462 (V537-100) BR1070337 (537-RAVFB) FKM INCLUDES DIAPHRAGM BR1073462 (V537-100)
INT. PARTS KIT CONSISTS OF ITEM NO'S 2, 4, 7, 8, 9, 13, 15, 17, 20	BR1070345 (K537-RF)

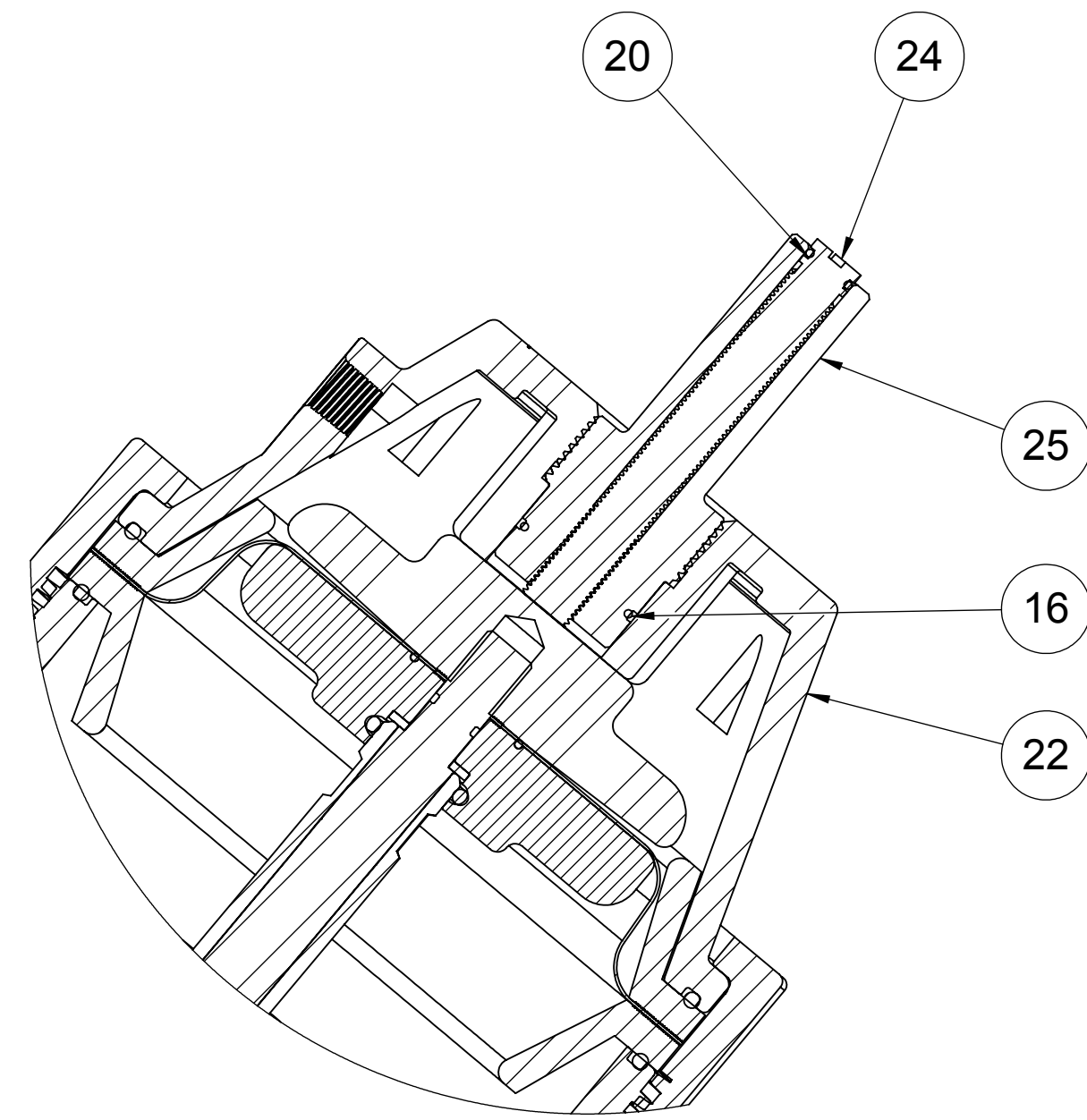
ASSEMBLY TOOLS	
DESCRIPTION	PART NO.
LIMITED STOP TOOL (TOOL NOT SHOWN)	BR1013556 (V560-579)
STRAP WRENCH (TOOL NOT SHOWN)	BR1073557 (V560-581)

SEE PAGE 2 FOR CONFIGURATION OPTIONS

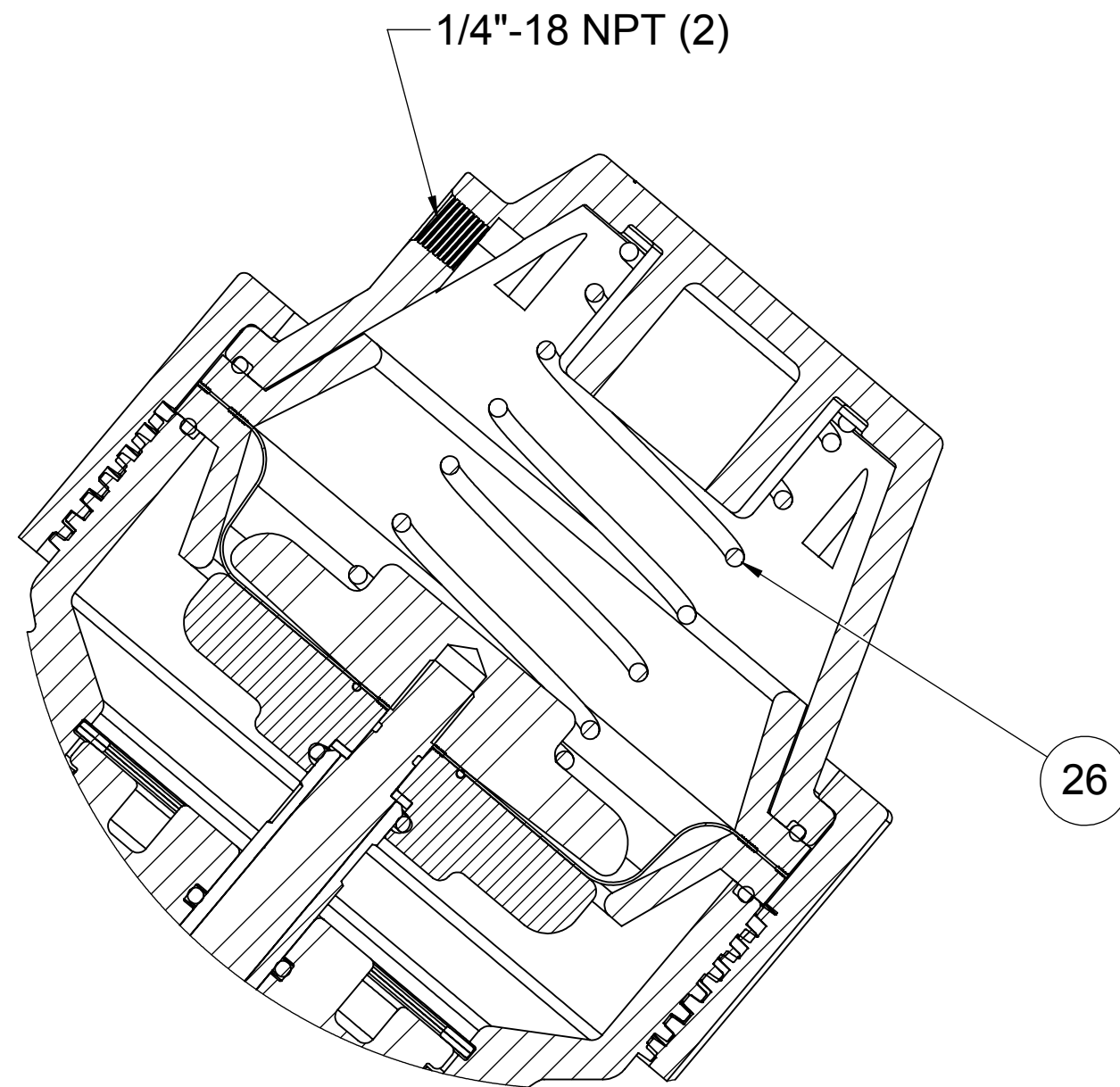
<small>THIS DOCUMENT IS SOLELY THE PROPERTY OF AQ Matic VALVE & CONTROLS COMPANY INC. REPRODUCTION, USE, DISCLOSURE, OR TRANSMISSION OF THIS DOCUMENT OR DETAILS CONTAINED HEREIN, IN PART OR IN WHOLE, IS PROHIBITED WITHOUT THE WRITTEN CONSENT OF AQ Matic ENGINEERING. THIS DOCUMENT AND ANY COPIES SHALL BE RETURNED TO AQ Matic UPON REQUEST.</small>		<small>COMPONENTS / ASSEMBLIES TO BE COMPLIANT AND COMPATIBLE WITH EUROPEAN UNION DIRECTIVE 2011/65/EC (RoHS2) & REGULATION (EC)1907/2006 (REACH) REQUIREMENTS</small>
<small>DO NOT SCALE DRAWINGS. DIMS. ARE IN INCHES (mm) UNLESS OTHERWISE SPECIFIED. ALL FINISHED MACHINED SURFACES 125 / OR BETTER. TOLERANCES: ANGLES ± 1° 1 PLACE .X: ± 0.15 (0.38) 2 PLACE .XX: ± 0.1 (0.3) 3 PLACE .XXX: ± 0.05 (0.13)</small>	THIRD ANGLE PROJECTION  APPROVALS: _____ DATE: 12-1-11 DRAWN: NE APPROVED: _____ CHECKED: _____	 AQ Matic <small>Valve & Controls Company Inc.</small> TITLE: CATALOG SHEET, 537 DIAPHRAGM VALVE SIZE: B DWG. NO.: BR1077691 SCALE: 1:4 REV: H SHEET 1 OF 2



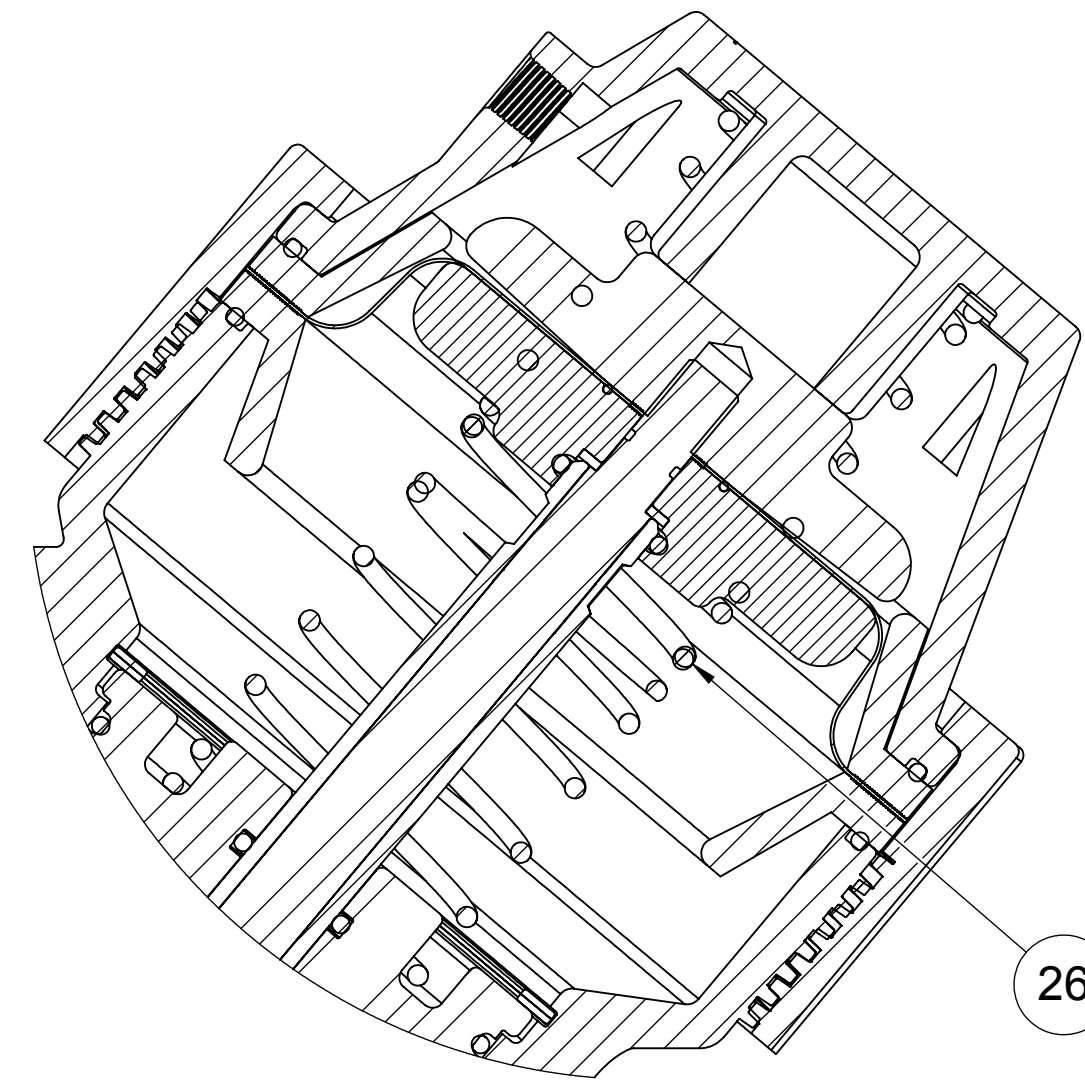
**BR1070316 (K537-X200-14000)
NORMALLY OPEN (STANDARD)**



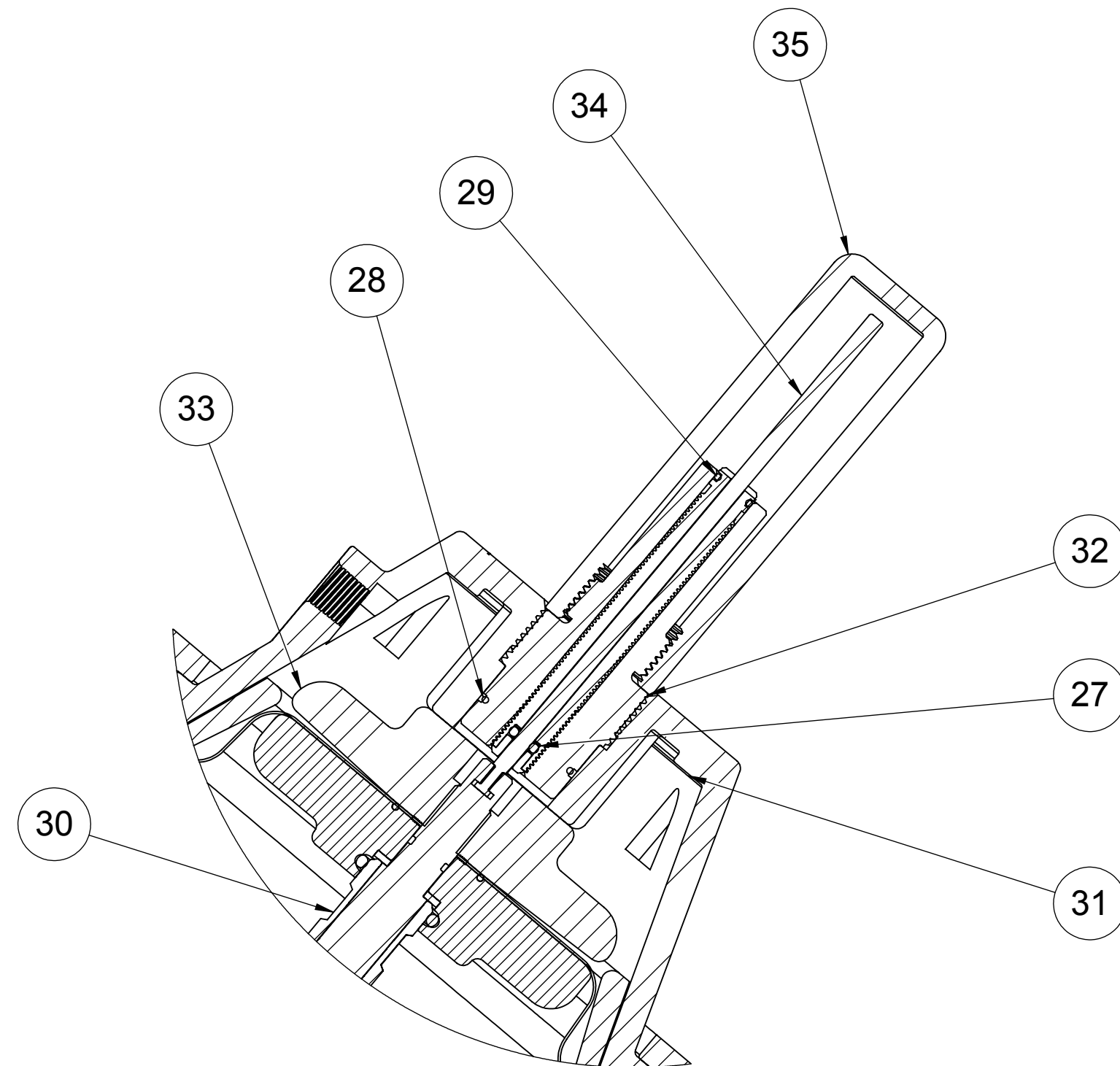
BR1070317 (K537-X210-14000)
LIMIT STOP



BR1071391 (K537-X202-14000)
SPRING ASSIST CLOSED



BR1071390 (K537-X201-14000)
SPRING ASSIST OPEN



K537-X221-14000
**LIMIT STOP/
POSITION INDICATOR**

REPAIR PARTS KITS	
DESCRIPTION	PARTS NO.
INT. PARTS KIT (LIMIT STOP) CONSISTS OF ITEM NO'S 21 THRU 24	BR1075237 (537-LS)
INT. PARTS KIT (SPRING ASSIST CLOSED) CONSISTS OF ITEM NO. 26	BR1075239 (537-S)
INT. PARTS KIT (SPRING ASSIST OPEN) CONSISTS OF ITEM NO. 26	BR1075239 (537-S)
INT. PARTS KIT (LIMIT STOP/POS INDICATOR) CONSISTS OF ITEM NO'S 27 THRU 35	BR1081805 (537-PI)

CONVERSION KITS	
DESCRIPTION	PART NO.
CONVERSION KIT (LIMITED STOP) CONSISTS OF ITEM NO'S 10, 21 THRU 25	BR1071377 (537-LSC)
CONVERSION KIT (SPRING ASSIST CLOSED) CONSISTS OF ITEM NO. 26	BR1075239 (537-S)
CONVERSION KIT (SPRING ASSIST OPEN) CONSISTS OF ITEM NO. 26	BR1075239 (537-S)
CONVERSION KIT (POSITION INDICATOR) CONSISTS OF ITEM NO'S 10, 27 THRU 35	BR1071378 (537-PIC)

REVISIONS					
ZONE	ECN	REV.	DESCRIPTION	DATE	APP'D
			SEE SHEET ONE FOR NOTES		

LIMITED STOP MODEL			
ITEM NO.	DESCRIPTION	PART NUMBER	QTY.
21	O-RING,2-012	BUNA 1071668 (ORB-012)	1
		FKM 1071787 (ORV-012)	
22	O-RING,2-024	BUNA 1071676 (ORB-024)	1
		FKM 1071791 (ORV-024)	
23	CAP, 3" VALVE, LS/PI,V537	NORYL 1073473 (V537-420K)	1
24	SCREW, LIMIT STOP	1073498	1
25	GUIDE, LIMIT STOP , K537	PVC 1073494	1

SPRING ASSIST CLOSED MODEL & SPRING ASSIST OPEN MODEL			
ITEM NO.	DESCRIPTION	PART NUMBER	QTY.
26	SPRING, COMPRESSION	1073467	1

LIMIT STOP/ POSITION INDICATOR MODEL			
ITEM NO.	DESCRIPTION	PART NUMBER	QTY.
27	LIMIT STOP SCREW, POS. IND.	1073506 (V537-700)	1
28	O-RING,2-024	BUNA 1071676 (ORB-024)	1
		BUNA 1071691 (ORV-024)	
29	O-RING,2-012	BUNA 1071668 (ORB-012)	1
		FKM 1071787 (ORV-012)	
30	SHAFT,537,PVC,PI	1073507 (V537-701)	1
31	CAP, 3" VALVE, LS/PI,V537	NORYL 1073473 (V537-420K)	1
32	GUIDE, LIMIT STOP,PI, K537	PVC 1073493	1
33	PLATE,DIAPHRAGM,537,UPR	NORYL 1073475	1
34	ROD,POSITION INDICATOR,537	1073492	1
35	SIGHT GLASS, POS INDICATOR 537	1073489	1

THIS DOCUMENT IS SOLELY THE PROPERTY OF AQ Matic VALVE & CONTROLS COMPANY INC. REPRODUCTION, USE, DISCLOSURE, OR TRANSMISSION OF THIS DOCUMENT OR DETAILS CONTAINED HEREIN, IN PART OR IN WHOLE, IS PROHIBITED WITHOUT THE WRITTEN CONSENT OF AQ Matic ENGINEERING. THIS DOCUMENT AND ANY COPIES SHALL BE RETURNED TO AQ Matic UPON REQUEST.

COMPONENTS / ASSEMBLIES TO BE COMPLIANT AND COMPATIBLE WITH EUROPEAN UNION DIRECTIVE 2011/65/EC (RoHS) & REGULATION (EC)1907/2006 (REACH) REQUIREMENTS

DO NOT SCALE DRAWING. DIMS. ARE IN INCHES (mm) UNLESS OTHERWISE SPECIFIED.
INTERPRET DIMS AND TOLERANCES PER ASME Y14.5M-2009
ALL FINISHED MACHINED SURFACES 125 / OR BETTER.
TOLERANCES:
ANGLES: ± 1°
1 PLACE .XX ± 0.015 (0.38)
2 PLACE .XXX ± 0.01 (0.3)
3 PLACE .XXXX ± 0.005 (0.13)

THIRD ANGLE PROJECTION	APPROVALS	DATE	 AQ Matic Valve & Controls Company Inc.
	NE	12-1-11	
TITLE CATALOG SHEET, 537 DIAPHRAGM VALVE			SIZE B DWG NO. BR1077691 REV H
SCALE 2:3			SHEET 2 OF 2

SEE PAGE 1 FOR
STANDARD NORMALLY OPEN MODEL